

Installation Hydraulic Clutch for the YAMAHA XS 650

The Installation of the hydraulic clutch is easy, but there are some points you should know that you not destroy some parts .

NOTE: Please read the instructions complete so that you have no trouble to install the clutch

1. Start

these parts are include in the kit:

- hydraulic master cylinder
- stainless stell hose in silver or black
- hydraulic clutch
- Clip
- plastic band



picture1

to install the clutch you need these tools



picture 2

- wrench SW 12 mm
- wrench SW 8 mm
- clip nippers

2. Remove the clutch push screw & housing assembly

Before you install the hydraulic clutch

you must remove the clutch push screw & housing assembly.

Please remove the left footrest, the gear lever and the left engine sidecover.

Also you can remove the clutch lever bracket from the left side of the handlebar, remove the clutch cable too, you don't need it anymore.

Remove the clutch push screw & housing assembly from the engine sidecover



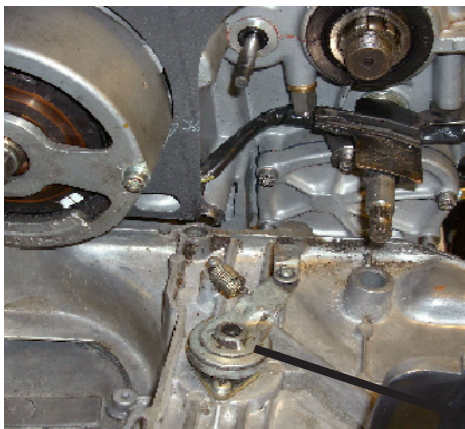
left sidecover

chrome cap (clutch adjuster)

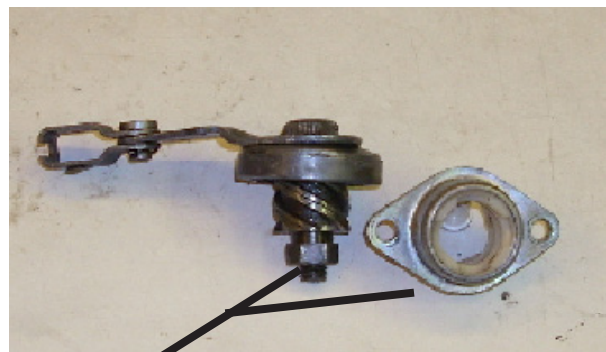
gear lever

front footrest

picture 3

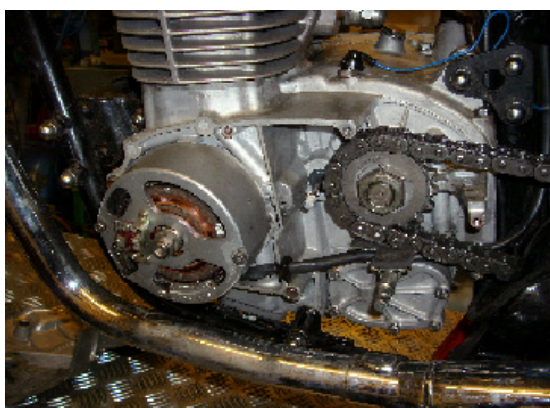


picture 4



picture 5

clutch push screw & housing assembly



the left side cover is remove

picture 6

3. Install the hydraulic clutch

On the crankcase of the XS 650 we must make some small modification.
the oil canal on the crankcase has a different tolerance through all the years,
so then it's possible that the hydraulic clutch didn't fit in the first time.
The oil canal on the left side of the crankcase need some small modifications so that the
hydraulic clutch fit easy.



picture 7

oil canal

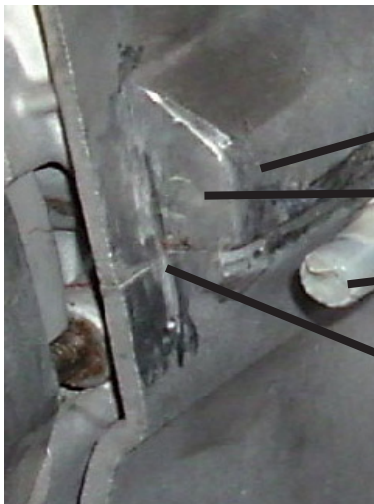


picture 8

little hand grinder

(ATTENTION: to be sure that you really need it)

the front side of the oil canal must be grind
a little bit **(be carefull)**



oil canal

this side of the oil canal

you must grind max. 1,5mm

clutch push rod

Attention !

**Don't grind to much because you can get there a
oil leak!**

picture 9

ATTENTION :
here you put the 8mm steel ball in

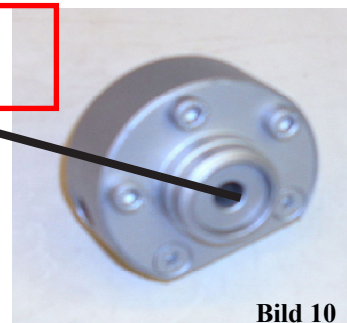


Bild 10

**Don't make any modification on the case
of the hydraulic clutch because you can
loose your warrenty!**

3. Install the hydraulic clutch

Remove on the left handside of the handlebar the clutch lever bracket and mount the hydraulic master cylinder on the handlebar.

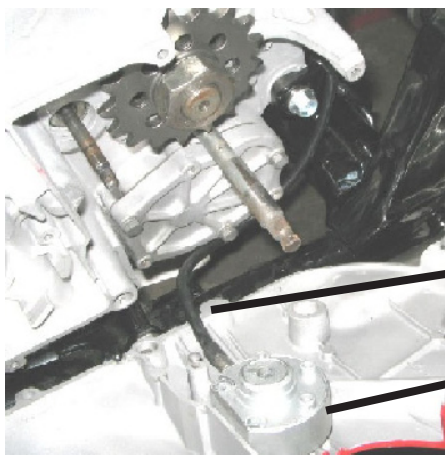


picture 11



picture 12

the stainless steel clutch hose goes under the drive chain to the main frame tube and up to the handlebar, you can fix the clutch hose with the straps on the frame

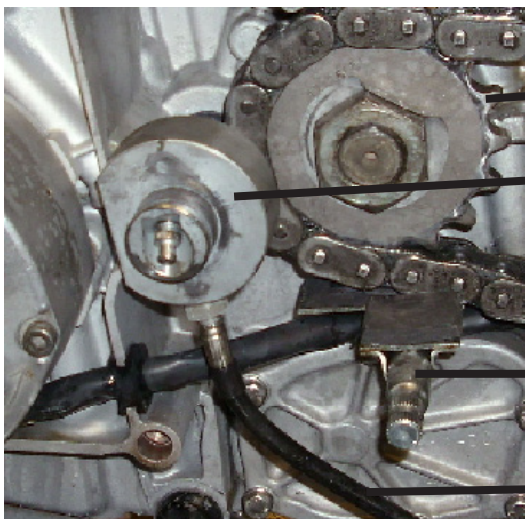


picture 13

clutch hose

hydraulic cluth part

here you can see the clutch part on the clutch push rod and the clutch hose



picture 14

Installation Hydraulic Clutch

sprocket

hydraulic cluth part

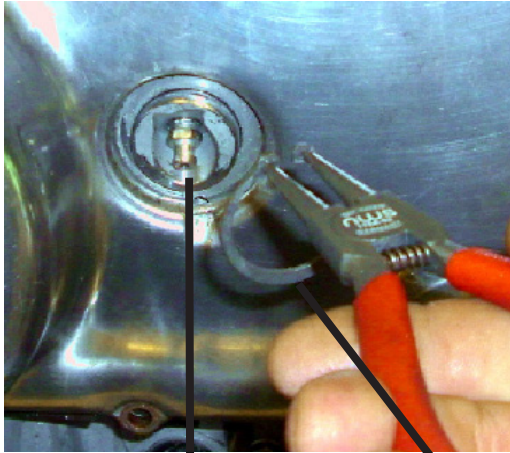
drive chain

shift shaft

clutch hose

3. Install the hydraulic clutch

you can now fix the clutch part with the clip in the side cover



picture 15

bleeder screw



picture 16

circlip

clip tool

the hydraulic clutch part fit now in the side cover and you can put the side cover safely back on the crankcase, be careful that you mount the side cover without any pressure.

Use the M6 screw to mount the side cover on the crankcase and after that you can start to bleed the system, it's the same job like to bleed the brake system.



picture 17

the clutch part fit in the sidecover.

bleeder screw

circlip

3. Install the hydraulic clutch

- 2a Kapitel



picture 18

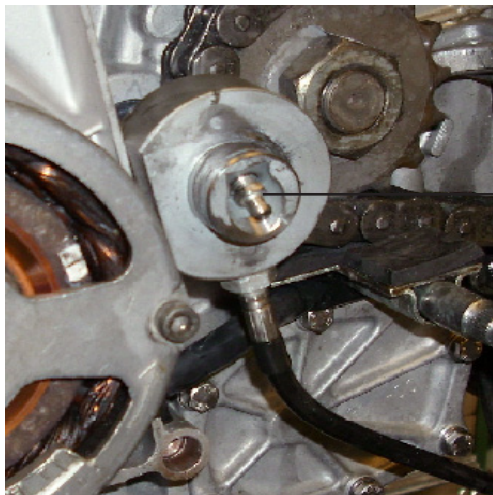
the hydraulic
master cylinder
picture 18 & 19



picture 19

ATTENTION!

to be sure that there is a gap of ~ 3mm
between the lever and the handlebar
switch housing, so that the lever can't be
blocked



picture 20

bleeder screw to bleed th system

ATTENTION!

Don't use DOT 5 Brake Fluid, it's possib-
le that the clutch work not perfect.



picture 21



picture22

in picture 21 and 22 you can see how to bleed the clutch system,
it's the same like to bleed the brake system

3. Install the hydraulic clutch

After you bleed the system, pump 3 or 4 times the clutch lever and the clutch will adjust by himself.



picture 18